

IGiS - 3D Pruthvi



IGiS



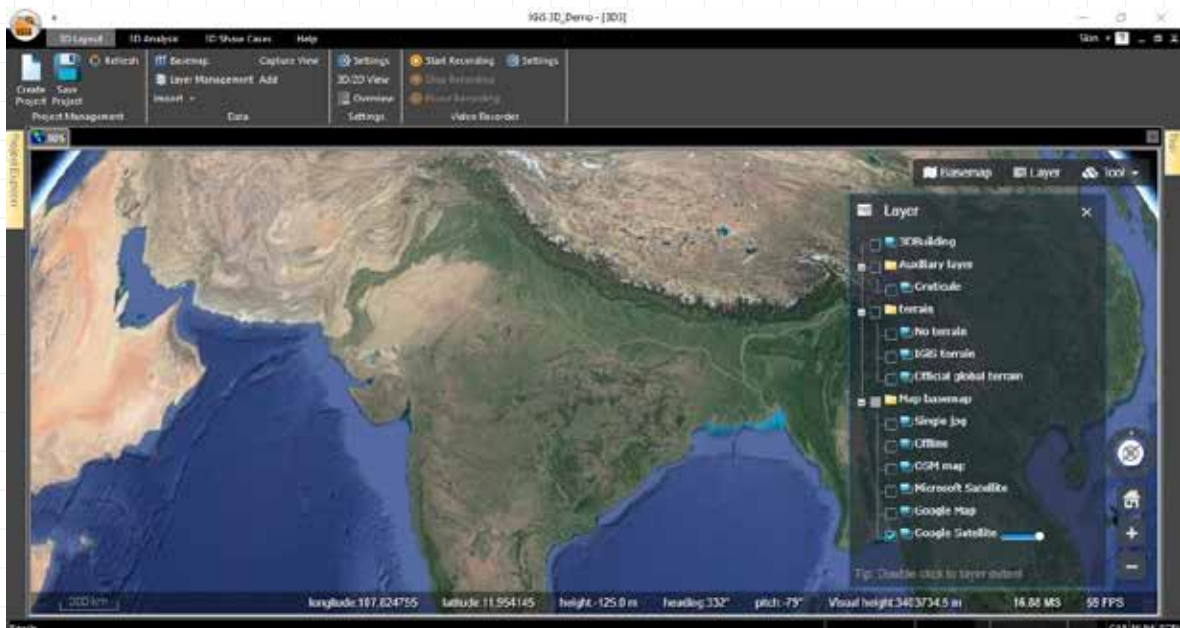
IGiS Pruthvi is an end-to-end 3D platform for creating, processing, viewing, and analyzing, massive (Global Scale) 3D geospatial data.



IGiS 3D is based on 64-bit multithreaded architecture. It supports Desktop, Enterprise, and Mobile platforms. It has tools for GIS-based cyclonic, Wind-based analysis and it provides SDK / API for customization.

Features:

- Support large amounts of heterogeneous distributed 3D geographic data
- Supports Terabytes of 3D Geospatial data
- Supports BIM, CITYGML, and 3D Tiles
- Supports 3D models in GLTF, DAE, OBJ, etc
- Advanced visualization and analytics
- Support of Desktop, Web, and Mobile platform
- Server-based workflow & Offline mode
- 3D development framework with SDK for customization
- Ready-to-use 100's UI widgets in your custom apps
- Have capabilities for GPU-based acceleration



Platform & Data Support

IGiS has inbuilt capabilities to integrate with WebGL & supports Virtual Reality (VR), Augmented Reality (AR), and other technologies to bring more reality and convenience to the three-dimensional experience.

IGiS supports various types of data formats as per OGC standards. It includes

- Imagery - High-resolution satellite, drone, and aerial imagery
- Terrain - Global-scale terrain in any projection
- BIM - Visualize massive design models at the highest detail
- 3D Building - Cities with millions of textured buildings
- Photogrammetry - Massive photogrammetry or LiDAR-derived meshes
- Point Clouds - Billions of points (LiDAR) with millimeter precision
- Vector data - GeoJSON, KML, Shape, etc
- OGC - WMS, WFS, WCS, CSW, WPS, etc

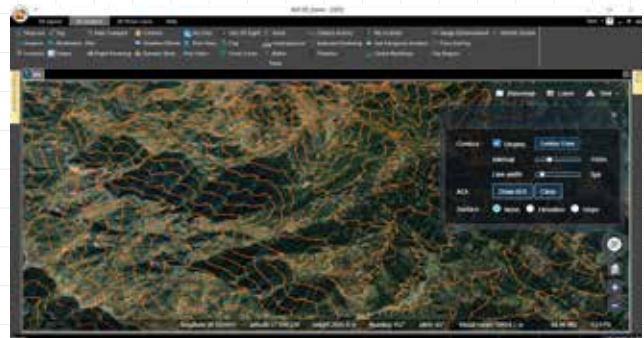
Analytical Tools

IGiS provides a wide range of analytical tools such as measurement tools, Overlay generation, animation, atmospheric effect, Buffer, Line of sight, view shed analysis, Submergence analysis, slope and contour generation, skyline, Route generation, movie creation, etc. It also includes temporal-based analysis capabilities like map comparison and Timeline based analysis. It also has the capability to save the scene and export it to any platform to view the content of the scene.

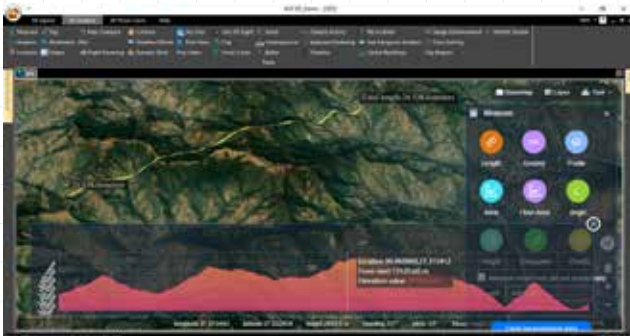
3D Viewer



Contours



Profile



Viewshed analysis



About SGL

Scanpoint Geomatics Limited is a leader in the Indian Geomatics Industry. We pioneer the nation's geospatial domain through IGiS - an indigenous technology which brings GIS, Image Processing and Photogrammetry together on the same platform. Based out of Ahmedabad, as Team SGL, we strive to provide innovative, futuristic and cost-effective products.

IGiS caters to a multitude of solutions across industries like Agriculture, Defence, Forestry, Disaster Management, Land Information, Mining, Power, Smart City, Urban Planning, Utilities and Location Based Services.

With the vast number of possibilities and opportunities presented by the field of Geomatics, our mission is to shape the future of a "GIS-enabled India".



Government of India | Department of Space
Indian Space Research Organisation

Product Development Partner

At, Scanpoint Geomatics Limited, we are most proud of our partnership with the Indian Space Research Organization (ISRO). With an innovative approach and a focused attention to details, the duo developed IGiS - India's first independent and integrated platform for geospatial industry.

The partnership has resulted in the integration of GIS, Image Processing and Photogrammetry on the IGiS platform. Backed by ISRO's domain expertise, we aim to push forth innovation and uplift the global geospatial domain.



10th Floor, Swati Clover, Shilaj Circle,
Sardar Patel Ring Road, Thaltej, Ahmedabad,
Gujarat-380054, India



+ 079 4602 3912

hello@sgligis.com

www.sgligis.com